

# Welcome Back!

RETURNING STUDENTS WELCOME, TUESDAY MAY  
26TH

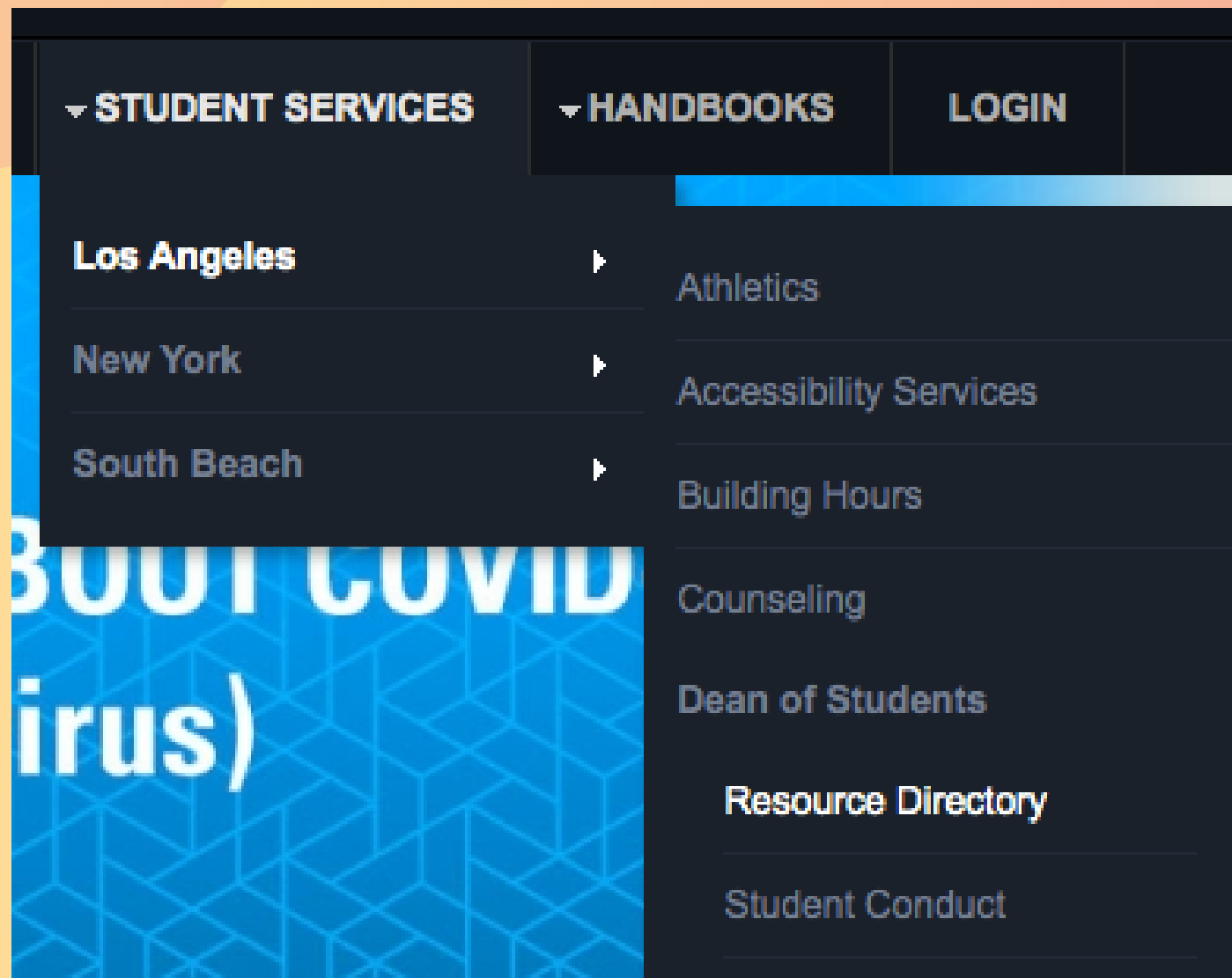
# Panel

Dr. Susan Ashe	Dean of Students
Dan Mackler	Dean of Los Angeles Campus
Dr. Mike Civile	Dean of Academic Advising
Dr. Mary Samuelson	Dean of General Education & Chair of Liberal Arts & Sciences
Prarthana Mohan	Dean of Academic Affairs
John Powers	Director of Veterans Services
Christine Daniels	Assistant Director of International Student Office
Lissa Wayne	Director of Financial Aid
Dr. Stanley Tam	Director of Counseling Services
Missy Dominguez	Director of Student Life

WELCOME BACK

# Dan Mackler

Dean of Los Angeles Campus

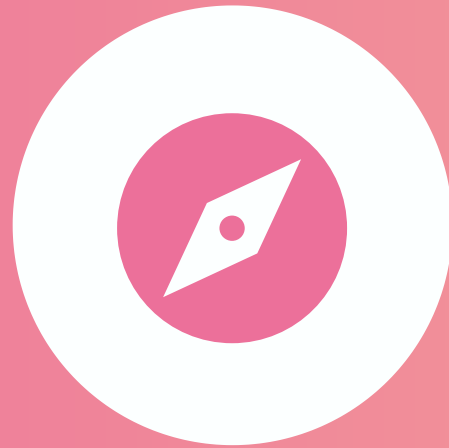


- Congratulations!
- We are still operating virtually
  - Review Resource List on the HUB
- Updates about NYFA and COVID-19

# Dr. Susan Ashe

Dean of Students

[susan.ashe@nyfa.edu](mailto:susan.ashe@nyfa.edu)  
[DeanStudentsLA@nyfa.edu](mailto:DeanStudentsLA@nyfa.edu)  
[LAtitle9@nyfa.edu](mailto:LAtitle9@nyfa.edu)

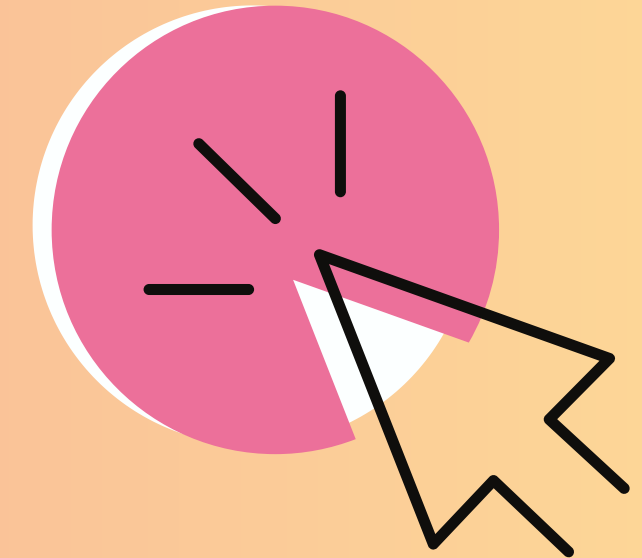


Student Conduct



Sex-Based Discrimination  
and Sexual Misconduct

-Title IX-



Hub





**NEW YORK  
FILM ACADEMY**  
STUDENT HUB

Search

HOME   ▾ BOARDS   EVENTS   DIRECTORY   PROJECTS   INTERNSHIPS   ▾ STUDENT SERVICES   ▾ HANDBOOKS   LOGIN

Los Angeles

New York

South Beach

Athletics

Accessibility Services

Building Hours

Counseling

Dean of Students

Resource Directory

Student Conduct

Student Grievances

**Study Tips**

Housing Dept

Film Dept

Film / Cine / Producing -

# MESSAGE FROM NYFA ABOUT COVID (Novel Coronavirus)



**Dr. Mike Civille &**

Dean of Academic Advising

**Dr. Mary Samuelson**

Dean of General Education & Chair of LAS

# Prarthana Mohan

Dean of Academic Affairs



Accommodations

[SAS@nyfa.edu](mailto:SAS@nyfa.edu)



Scheduling

[AAOfficeLA@nyfa.edu](mailto:AAOfficeLA@nyfa.edu)  
[LA.Schedules@nyfa.edu](mailto:LA.Schedules@nyfa.edu)

# Prathana Mohan

Dean of Academic Affairs

## REGISTER

Make sure you are registered.

## CLASSES

Attend the right ones!

## TIME

In Pacific Time Zone.



# John Powers

Director of Veterans Services

## GI BILL

Updates

## VETERANS EVENTS

Vet2Vet, Mondays, 12pm PT

## SUPPORT SERVICES

VA, Internal, Soldiers Project

## VETERANS SERVICES

veteran@nyfa.edu

(818) 333-3560

## RESOURCES

West Los Angeles Medical Center

11301 Wilshire Blvd, LA

(310) 478-3711

Sepulveda Vet Center

9737 Haskell Ave, Sepulveda

(818) 892-9227

Department of Veterans Affairs

(888) 442-4551

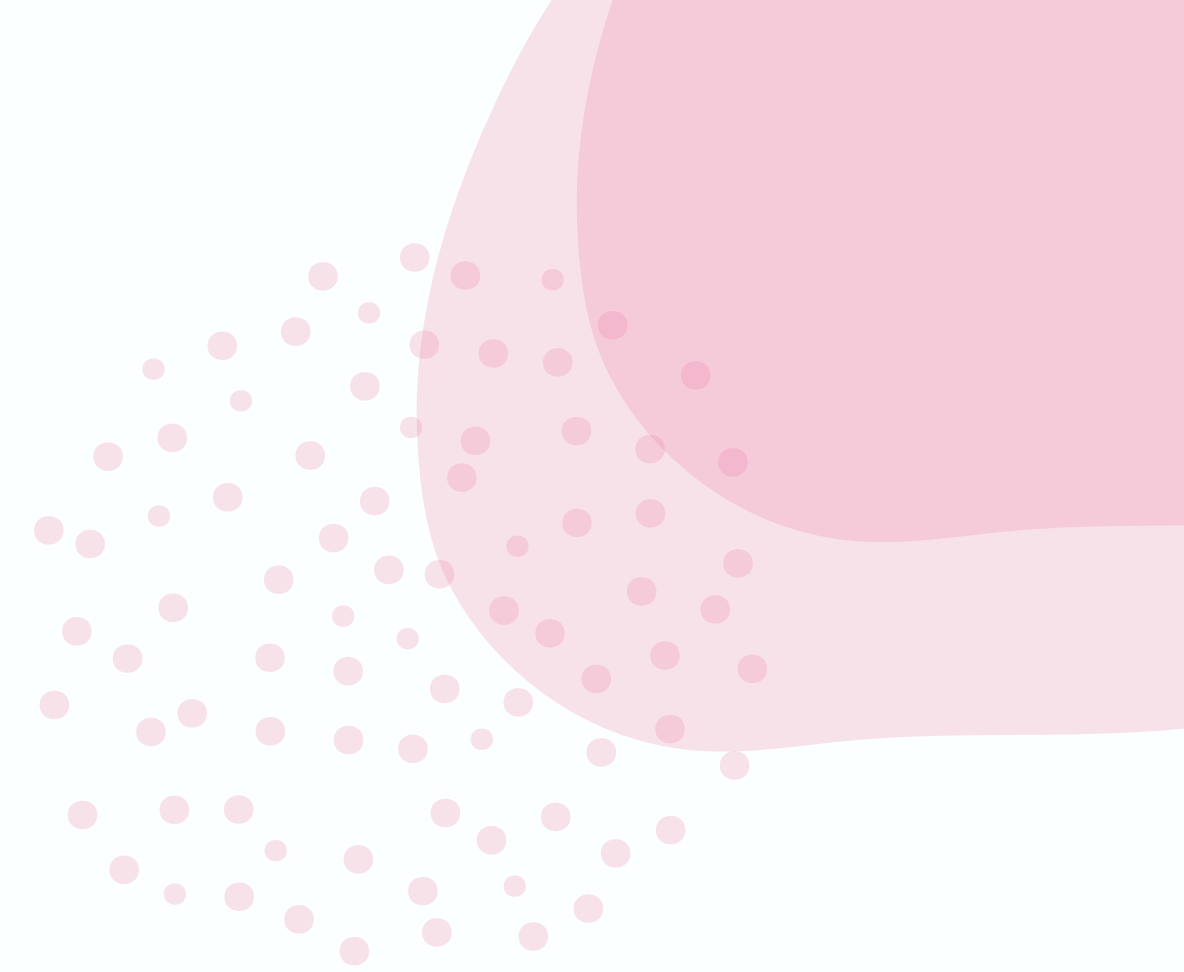
[www.gibill.va.gov](http://www.gibill.va.gov)

**INTERNATIONAL STUDENT OFFICE**  
**LAIInternational@nyfa.edu**



**Notify us of your current  
address to maintain status.**

**CHRISTINE  
DANIELS**

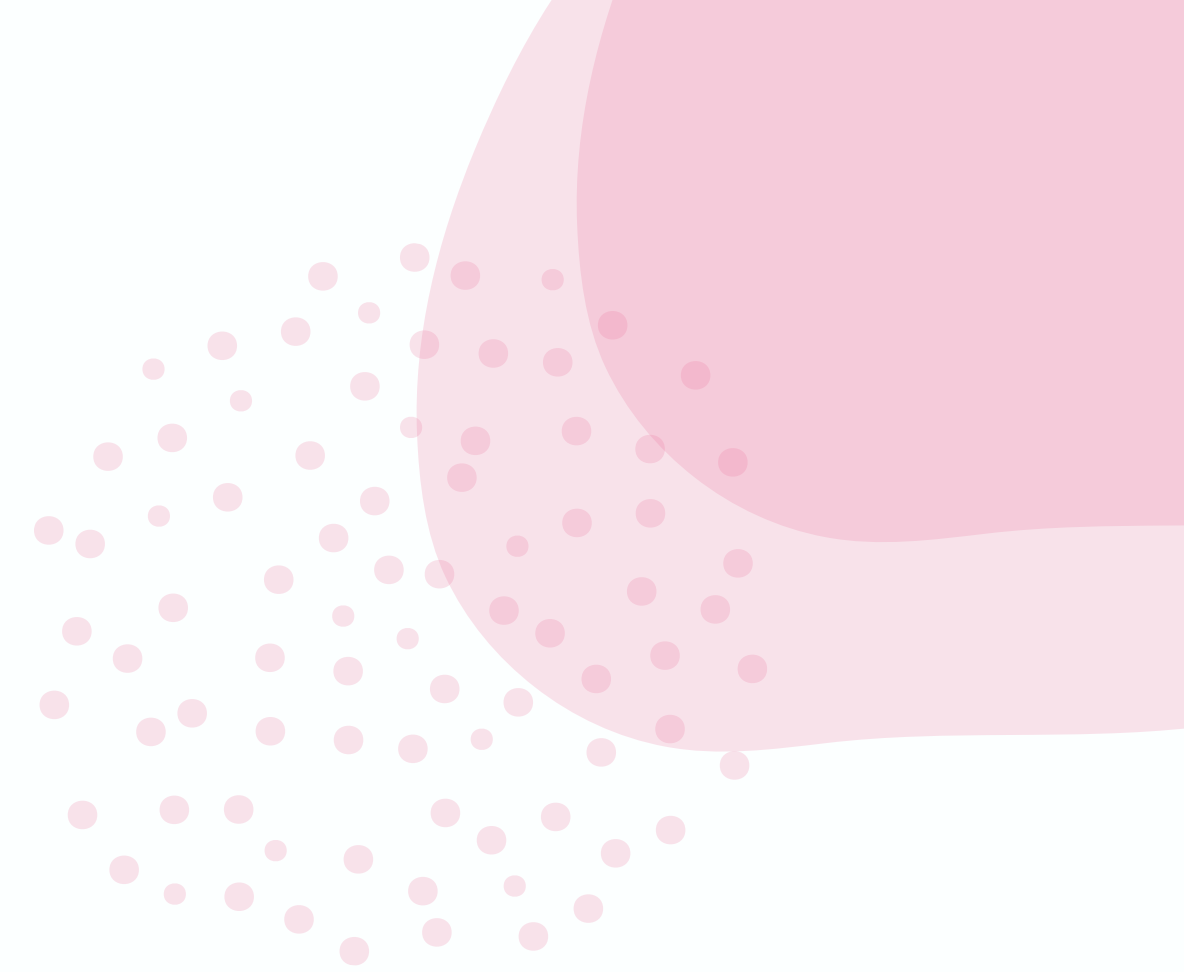


**INTERNATIONAL STUDENT OFFICE**  
**LAIInternational@nyfa.edu**



**OPT Information sessions  
begin June 15.**

**CHRISTINE  
DANIELS**

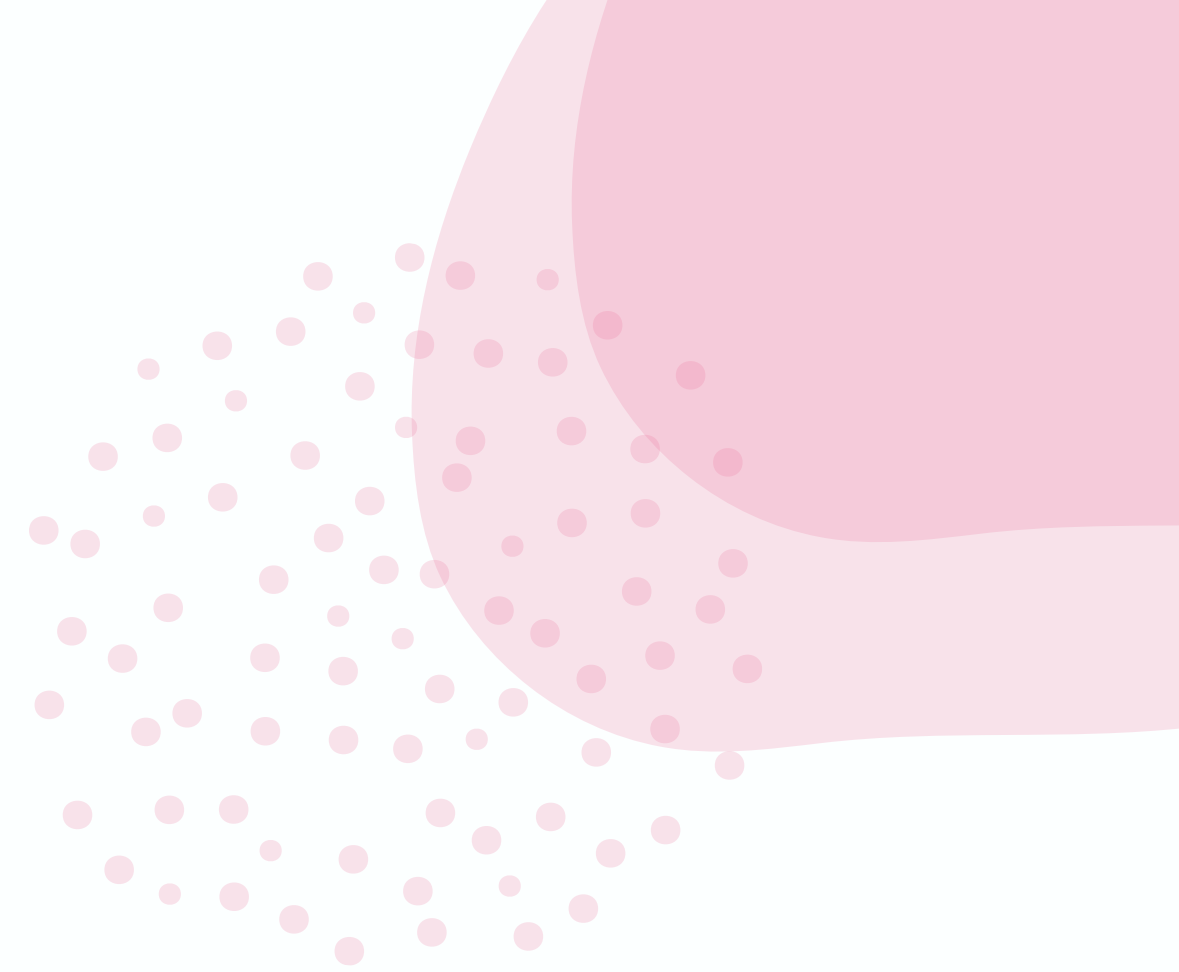


**INTERNATIONAL STUDENT OFFICE**  
**[LAInternational@nyfa.edu](mailto:LAInternational@nyfa.edu)**

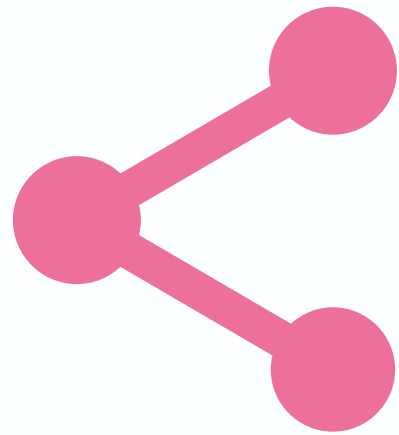


**Stay updated on travel  
bans.**

**CHRISTINE  
DANIELS**

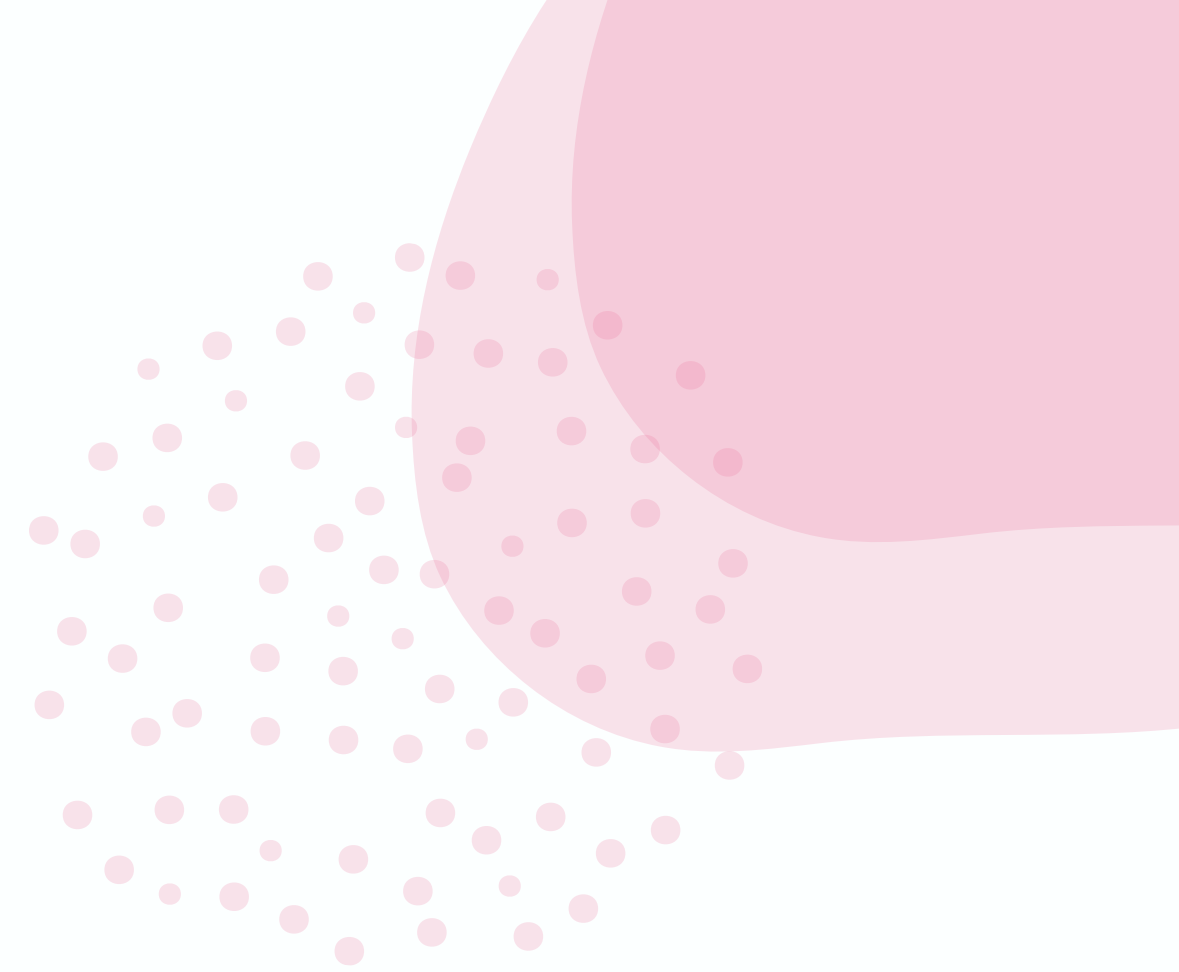


**INTERNATIONAL STUDENT OFFICE**  
**LAIinternational@nyfa.edu**



**Contact us!**  
**Let's schedule a time.**

**CHRISTINE  
DANIELS**





# Lissa Wayne

DIRECTOR OF FINANCIAL AID





# Federal Student Aid Living Expense Funding


[FinancialAid@nyfa.edu](mailto:FinancialAid@nyfa.edu)



**ELECTRONIC FUND TRANSFER**  
is how living expense reimbursements will  
be sent, not checks.

**FAILURE TO COMPLETE FORM**  
will result in NYFA returning your living  
expense checks to the US Department of  
Education

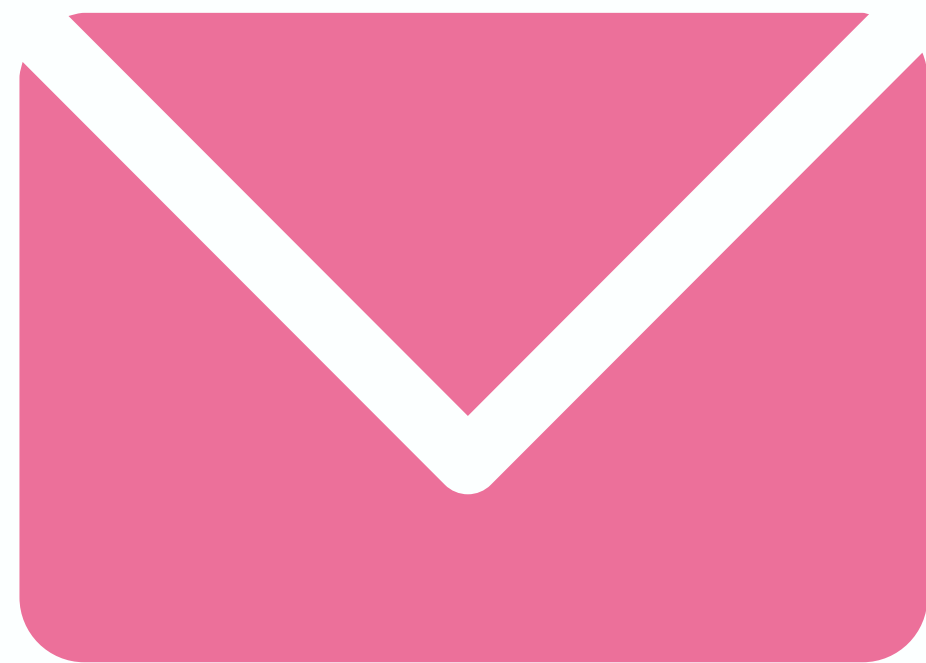
**FEDERAL STUDENT AID RECIPIENTS**  
that have not yet completed the EFT form  
will be emailed with a link to the form.





# Federal Student Aid Living Expense Funding

[FinancialAid@nyfa.edu](mailto:FinancialAid@nyfa.edu)



## EFT FORM EMAILS

will identify if the student or parent will be required to complete the EFT form.

## THE BENEFICIARY

is the account holder

## BENEFICIARY LOCATION

is the account holder's resident city.

## ENTER ACCURATE BANK INFO

to avoid funding delays. If the transaction fails, you will be contacted to revise info.





# CARES Grant

for Federal Student Aid  
Receipts only

[FinancialAid@nyfa.edu](mailto:FinancialAid@nyfa.edu)



## EMERGENCY FINANCIAL AID GRANT

will be granted to qualified students who complete proper application & forms.

## ELIGIBLE EXPENSES

include food, housing, course materials, software licenses, technology, healthcare, and childcare.

## DOCUMENT ADDITIONAL EXPENSES

due to changes in campus operations resulting from pandemic for cash grant award to be paid.



# Dr. Stanley Tam

Director of Counseling Services

CounselingLA@nyfa.edu



Groups



Hours



One on One

**Now**

ALSO CREATES COMMUNITY  
VIRTUALLY!

**Student Life**

StudentLife.LA@nyfa.edu

MISSY DOMINGUEZ  
DIRECTOR OF STUDENT LIFE

**Before**

CREATED COMMUNITY ON  
CAMPUS

# Showcase of Recent NYFA Films

Friday, May 29th, 5pm Pacific Time

Visit Hub Events Tab   [FestivalsLA@nyfa.edu](mailto:FestivalsLA@nyfa.edu)

# Panel

Dr. Susan Ashe	Dean of Students
Dan Mackler	Dean of Los Angeles Campus
Dr. Mike Civile	Dean of Academic Advising
Dr. Mary Samuelson	Dean of General Education & Chair of Liberal Arts & Sciences
Prathana Mohan	Dean of Academic Affairs
John Powers	Director of Veteran Services
Christine Daniels	Assistant Director of International Student Office
Lissa Wayne	Director of Financial Aid
Dr. Stanley Tam	Director of Counseling Services
Missy Dominguez	Director of Student Life

WELCOME BACK

# Welcome Back!

RETURNING STUDENT WELCOME, TUESDAY MAY 26TH